

第三声部圆号

AUDITION REPERTOIRE FOR THIRD HORN

一、独奏部分 Solo Repertoire

自选独奏作品 One solo work of your choice

二、乐队片段 Orchestral Excerpts

1. 贝多芬《第七交响曲》第一乐章 89 至 102 小节、436 至 450 小节（演奏一声部） P1

BEETHOVEN: Symphony No. 7 [Mov. 1: m.89-102, m.436-450] - Horn I

2. 布里顿《青少年管弦乐队指南》J 至 L 后第 2 小节 P3

BRITTEN: The Young Person's Guide to the Orchestra [J to 2 after L]

3. 施特劳斯《蒂尔的恶作剧》15 至 21 小节、10前 4 小节至 11，37至 38前 2 小节（演奏一声部） P4

STRAUSS: Till Eulenspiegels lustige Streiche [m.15-21, 4 before 10 to 11, 37 to 2 before 38] – Horn I

4. 门德尔松《第三交响曲》第二乐章 F 至 G 前 2 小节、第三乐章 D 后 5 小节至 E 前 3 小节 P7

MENDELSSOHN: Symphony No. 3 [Mov. 2: F to 2 before G, Mov. 3: 5 after D to 3 before E]

5. 柴可夫斯基《第四交响曲》第一乐章开头至 A 后 6 小节、I 至 K 后第 1 小节（演奏一声部）	P9
---	----

TCHAIKOVSKY: Symphony No. 4 [Mov. 1: beginning to 6 after A, I to
1 after K] – Horn I

三、视谱演奏 Sight reading

Corno I

Symphonie Nr. 7

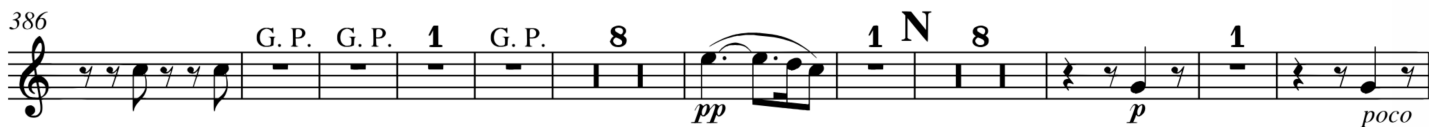
A-dur

Ludwig van Beethoven op. 92
herausgegeben von Peter Hauschild

Poco sostenuto (♩ = 69)

in A

[illegible]



2. 布里顿《青年管弦乐指南》

in F
J至L后第二小节

The image shows a musical score for the song "The Rose Tree". It consists of two staves, both in 2/4 time. The top staff is for the vocal line, starting with a treble clef and a key signature of one sharp (F#). The bottom staff is for the piano accompaniment, also in 2/4 time, with a treble clef and a key signature of one sharp. The music is written in a simple, folk-like style. The vocal line begins with a first ending bracket over the first measure. The piano accompaniment features a steady eighth-note pattern in the right hand and a bass line in the left hand. The score is marked with a forte (ff) dynamic. The title "The Rose Tree" is written in a decorative font at the top right of the page.

8 **K**

p *cresc.*

p *cresc.*

15

L

mf

mf

Richard Strauss
Till Eulenspiegel's Merry Pranks
Op. 28

Horn I in F.

Gemächlich. $\text{♩} = \text{des } \frac{4}{8}$ *allmählich lebhafter*

cresc. *mf* *cresc.* *ff* *mf* *cresc.* *f* *ff* *ff* *ff*

Immer sehr lebhaft. *a tempo* *poco rit.* *mf* *ff* *f* *mf* *ff* *f* *ff* *dim. p* *p* *f* *f* *p* *p* *mf* *dim. pp*

5 1 1 8 2 2 1 3 4 2 5 2 6 16 7 6 1 8 2 2 8 2 1 9 9

The musical score for Horn I in F consists of ten staves. It begins with a tempo marking of 'Gemächlich.' and a time signature of 4/8. The first staff includes a measure rest of 5 measures. The second staff has a tempo change to 'allmählich lebhafter'. The third staff is marked 'Volles Zeitmass. (sehr lebhaft)'. The score includes various dynamics such as 'p', 'mf', 'ff', 'f', 'dim.', and 'pp'. There are also tempo markings like 'a tempo' and 'poco rit.'. Fingerings are indicated by numbers 1 through 8. A red bracket highlights a specific section of the music across the third and fourth staves.

Horn I in F.

5

35 *cresc.* *fp* *cresc.* *f* *f* *ffp*

36 *cresc.* *f* *ff* *mf* *cresc.*

37 *ff* *ausgelassener und lebhafter*

38 *ff* *drohend* *Gleichgültig. drohend*

39 *ff* *etwas breiter mit Dämpfer*

40 *p* *Dämpfer weg* *mit Dämpfer*

41 *p* *Epilog. doppelt so langsam (im Zeitmass des Anfangs 4/8)*

42 *pp*

43 *pp*

44 *f* *cresc.* *ff* *fff*

45 *fff*

Symphony No. 3 in A minor, Op. 56 (Scottish)

in F

4
160

p

1

171

8

mf cresc. *p cresc.*

191

F

ff

198

1

208

ff

217

sempre ff

1

225

G

8

ff *p*

242

H

3 7

pp *dim. . .* *pp* *pp*

265

1

A

p *pp*

attacca

Adagio $\text{♩} = 76$

24 **B** 8

ff *sf*

46

C

1 4 8

pui f *ff* *f* *dim.* *p* *>* *p*

67

D

1

cresc. *ff* *f*

76

cantabile

dim. . . *p* *sf* *dim. . .*

85

cresc. *sf* *dim. . .*

94  **E** 1 *pp* *p cresc.* *f sf ff*

107 **F** 1 *sf* *pui f* *ff*

116 1 *ff* *dim.---* *p* *p* *p* 1 *p* 2

131 **H** 6 *cresc.---* *p* *p* *dim._* *p cresc.* *attacca*

f p *f p* *cresc.---* *f p*

8 1 *f p* *f p* 22 **A** *ff*

38 3

51 **B** *ff* *sf*

62 **C** 17 *ff* *sf*

87 7 *sf* *ff*

103 **D** 2 *p cresc._* *f* *f p* *f p*

112 2 *f p* *f p* *f p* *f p*

121 *fp* *cresc._* *cresc.* *ff*

131 1 *ff* *sf* *sf* *sf* 4

Peter Ilyich Tchaikovsky
Symphony No. 4 in F Minor, Op. 36

Horn 1 in F

I

Andante sostenuto

ff

6

14

A

f

mf

p

20

3

riten.

2

Moderato con anima (♩. = In movimento di Valse)

16

Fl. u. Klar.

44

f

48

B

2

p

poco cresc.

55

mf

p

cresc. poco a poco

63

4

C

1

f

f

73

1

f

f

f

78

4

f

Tchaikovsky — Symphony No. 4 in F Minor, Op. 36

Horn 1 in F

2

86 *f*

90 *ff* **D**

94

99

103 **E** 3 *ritardando* *Meno mosso* *ritardando* (Klar. 1) *Moderato assai, quasi Andante*

128 **F** 6 (Viol.) *Ben sostenuto il tempo precedente* *poco a poco stringendo al -* **G** 12 *Fl. u. Klar.*

147 *p* *poco più f* *sempre stringendo al -* 2

156 **H** *Moderato con anima (Tempo del comincio)* 3 *f* *fff*

163 *fff* **I** 3 *fff*

171

176 *fff*

Horn 1 in F

3

[illegible]